

WORK.NO. 20-1543

E/TYPE.

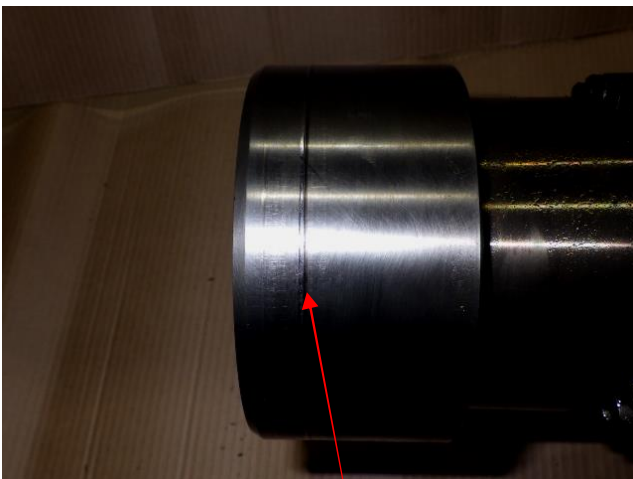
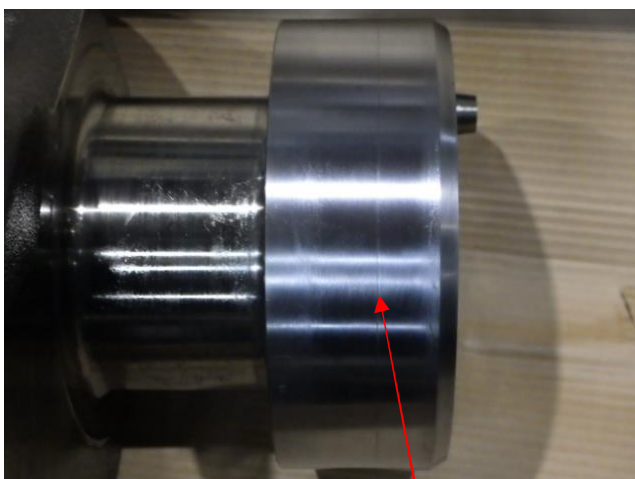
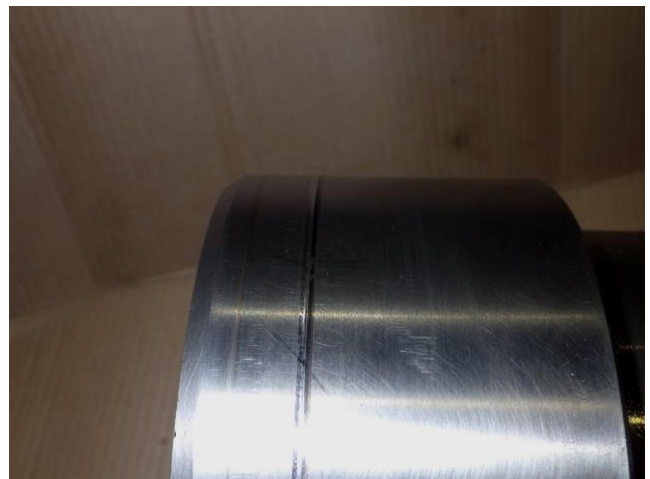
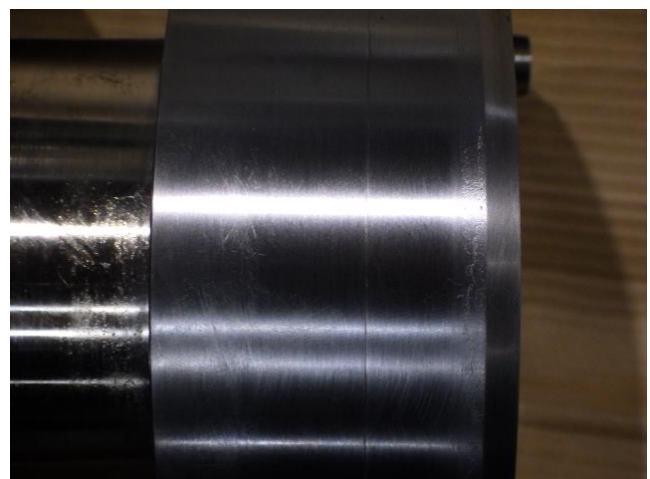
P/NAME. クランク軸 Crankshaft

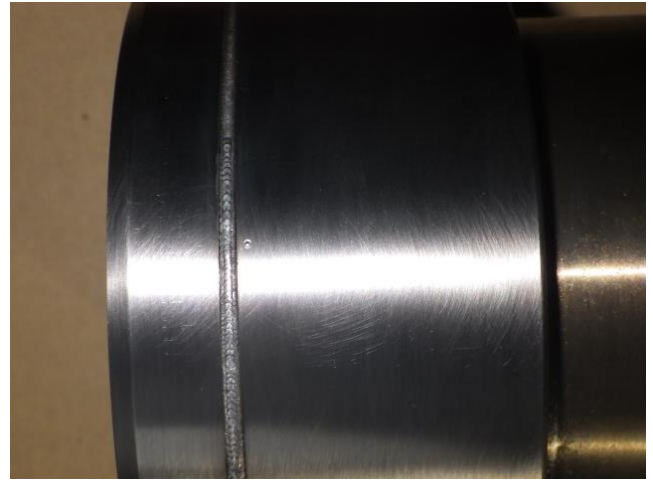
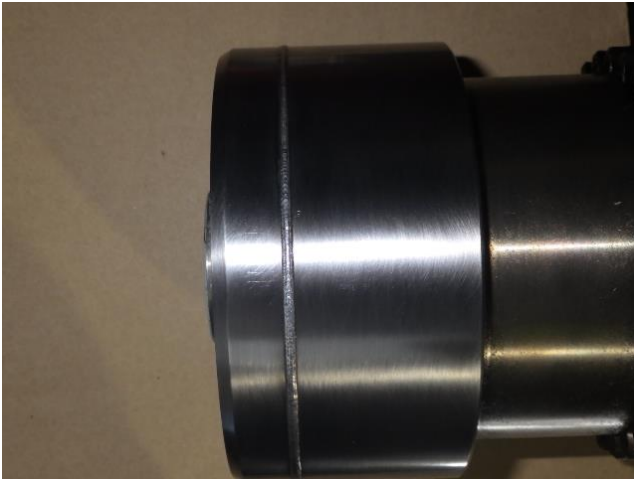
MARINE GIKEN SERVICE CO., LTD

NOVEMBER 11-19

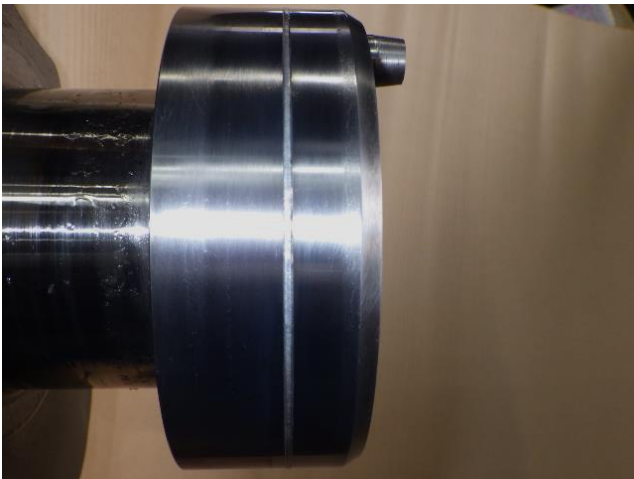


受入 Arrival of goods condition.

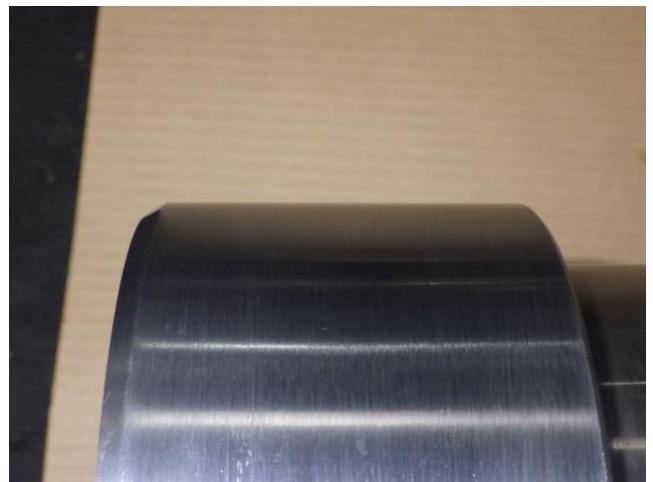
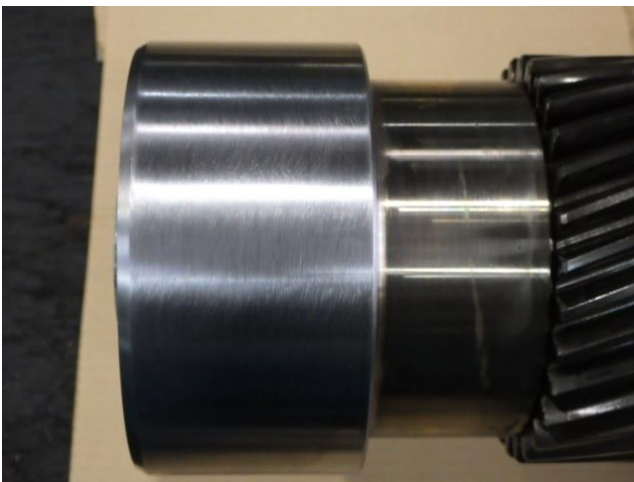
ギヤ側 オイルシール当たり面摩耗 $\phi 110$ Gear side oil seal contact surface wear $\phi 110$ フライホイール側 オイルシール当たり面摩耗 $\phi 150$ Flywheel side oil seal contact surface wear $\phi 150$ 



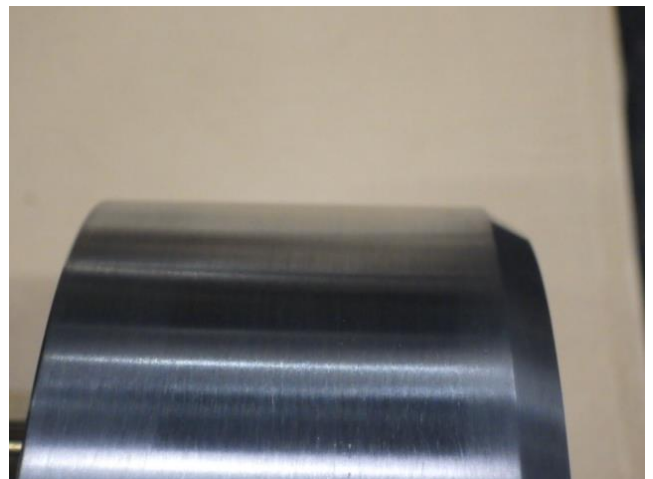
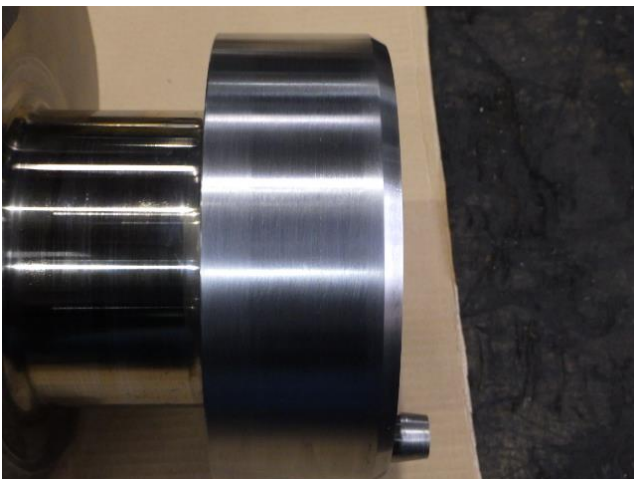
ギヤ側 オイルシール摩耗部 レーザー溶接肉盛 Gear side oil seal wear part laser welding.



フライホイール側 オイルシール摩耗部 レーザー溶接肉盛 Flywheel side oil seal wear part laser welding.



ギヤ側 オイルシール部 修正後 After repair the oil seal on the gear side. Completed dimensions. $\phi 110 \times -0.035 \times 3L$



フライホイール側 オイルシール部 修正後 After repair the oil seal on the gear side. Completed dimensions. $\phi 150 \times -0.010 \times 2L$